



Geospatial findings of XDR typhoid Outbreak in Pakistan- Story of spread in two cities

Dr. Abdul Momin Kazi, MBBS, MPH, PhD (Candidate)

Senior Instructor (Research)

Department of Pediatrics & Child Health

The Aga Khan University, Karachi, Pakistan

Hyderabad

Outbreak investigation of XDR typhoid in Hyderabad, Pakistan I

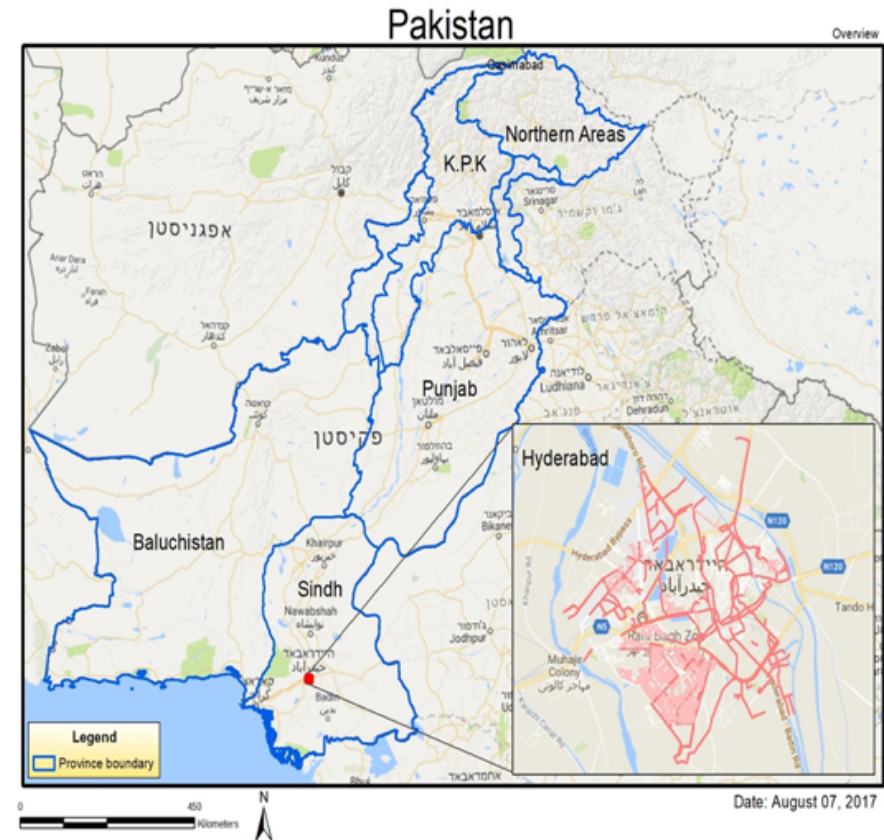
- Largest outbreak of ceftriaxone-resistant *S Typhi* reported in Hyderabad in Nov 2016
- Clinical laboratory of Aga Khan University Hospital reported cases admitted at Aga Khan Maternal & Child Center Hyderabad with ceftriaxone resistant *S. Typhi*
- Outbreak investigation was initiated

Outbreak investigation of XDR typhoid in Hyderabad, Pakistan II

- Few therapeutic options are available
 - Azithromycin and
 - Carbapenems
- These are expensive and have little accessibility

Geospatial Mapping I

- Geospatial mapping of cases
 - Hyderabad city of Sindh (1.7 million)
 - Latifabad (0.67 million)
 - Qasimabad (0.3 million)
- Age distribution of cases
 - ≤ 5 yrs ($\approx 60\%$)
 - 5-10 yrs (27%)
 - >10 yrs (13%)

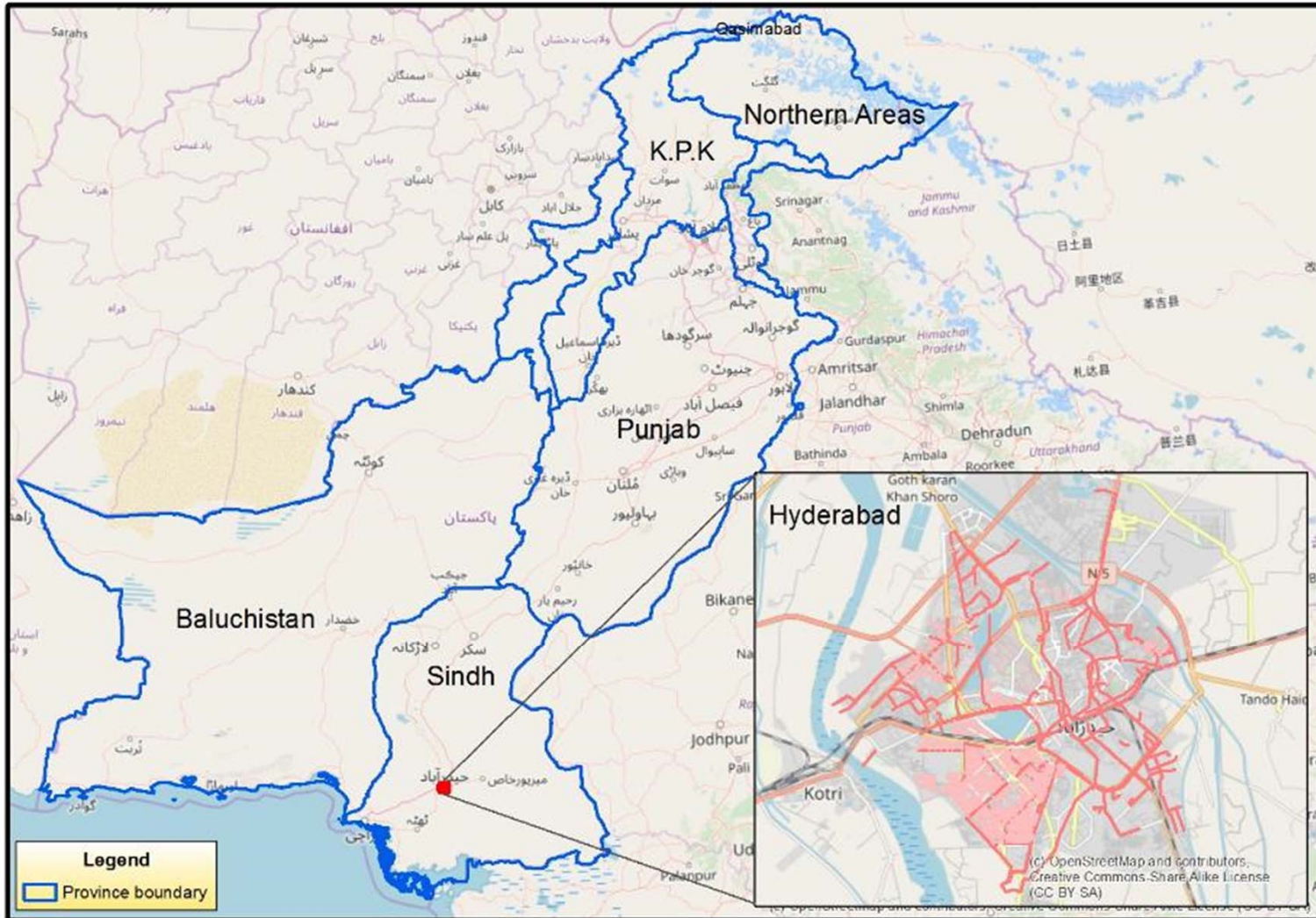


Geospatial Mapping II

- Open street view map of Hyderabad was integrated in the Esri ArcGIS, version 10.5
- Important relevant landmarks, including paper-based map of the Hyderabad sewerage map was scanned and georeferenced in the Esri® ArcGIS software
- Coordinates were collected through the use of an in-house application form
- Color coding for both cases and controls and positive water samples

Pakistan

Overview



3/26/19



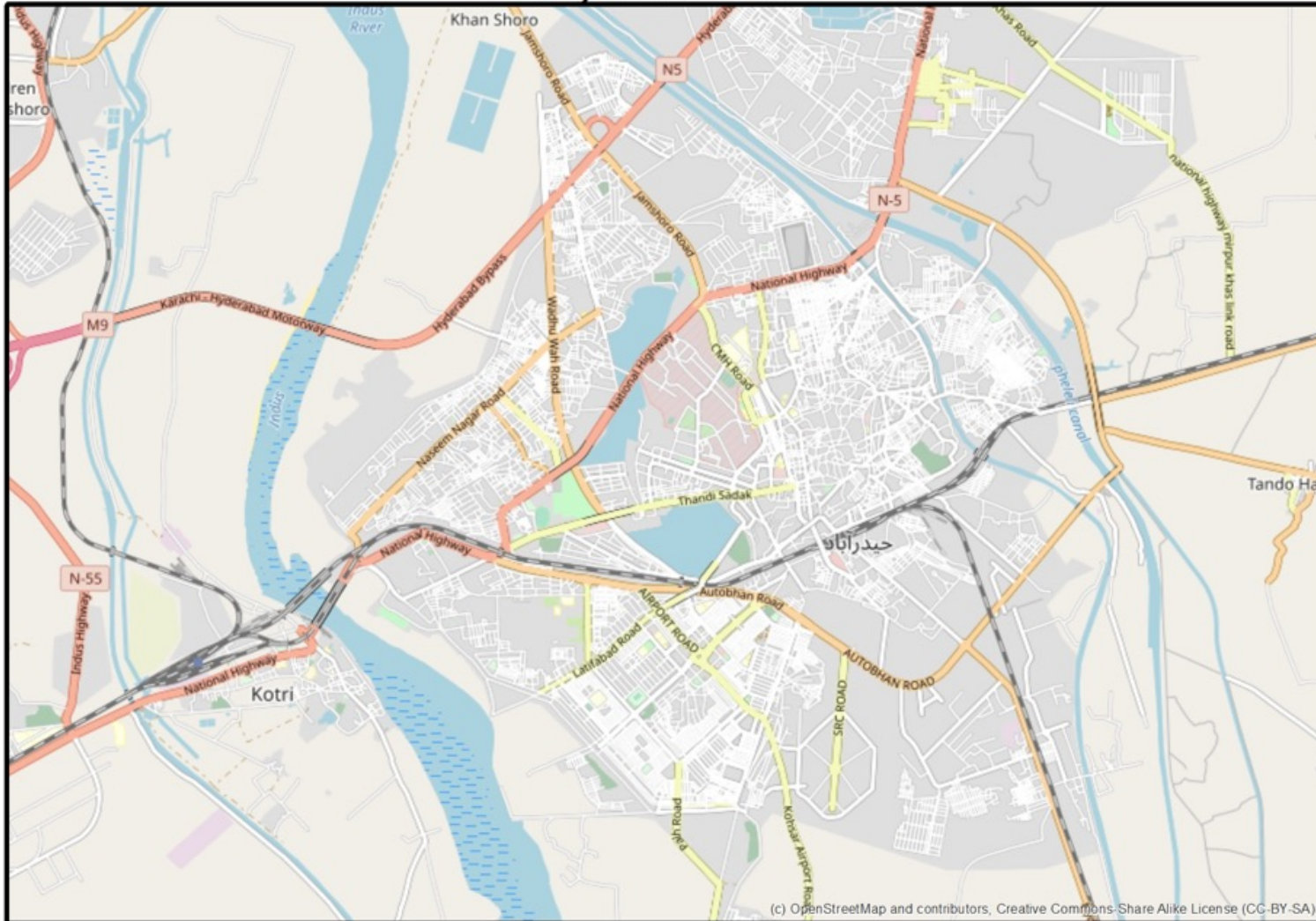
11th International conference on Typhoid, 2019

Date: August 07, 2017

8

Hyderabad

Overview



(c) OpenStreetMap and contributors, Creative Commons Share Alike License (CC-BY-SA)

3/26/19



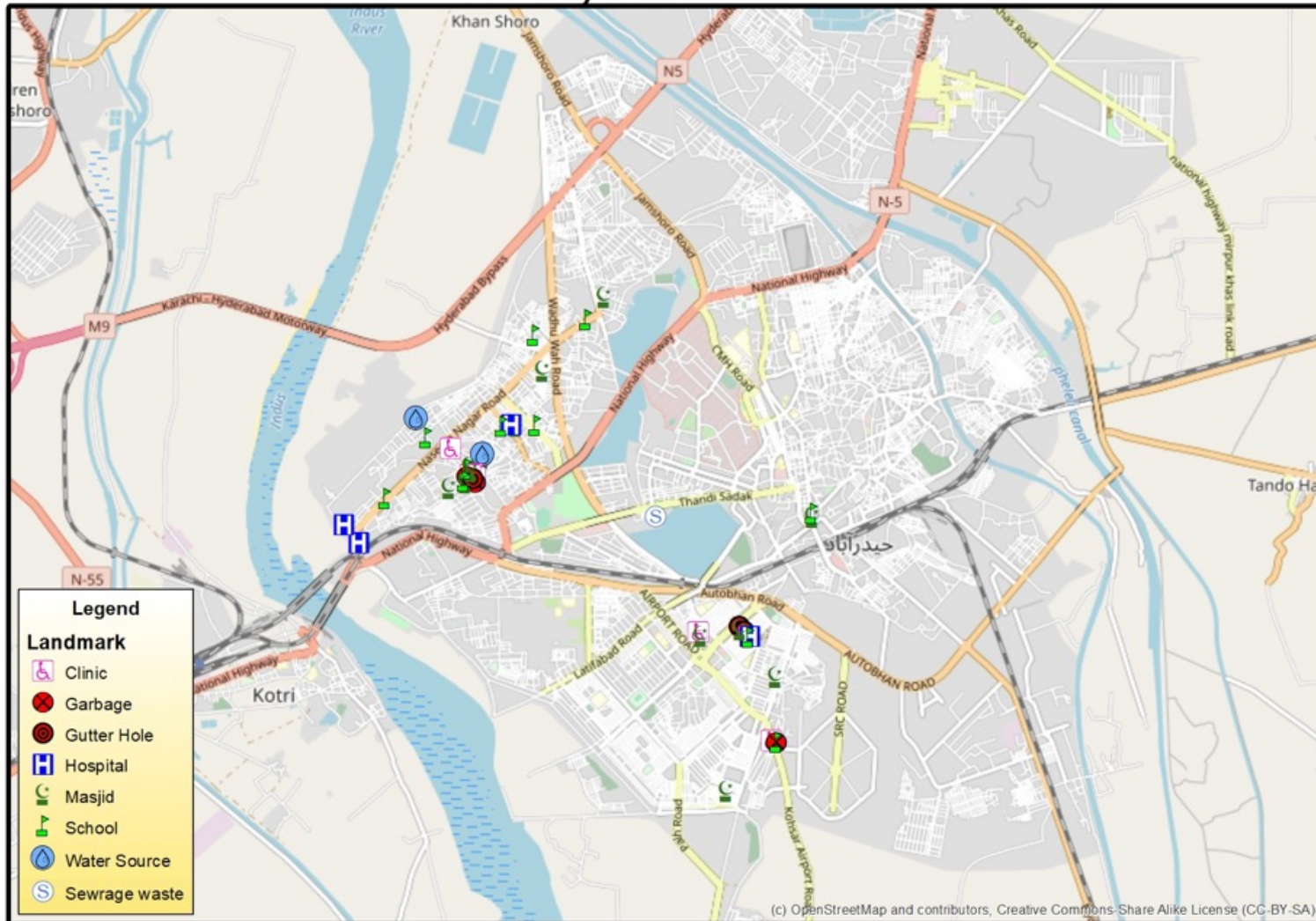
11th International conference on Typhoid, 2019

Date: March 20, 2018

9

Hyderabad

Overview



3/26/19

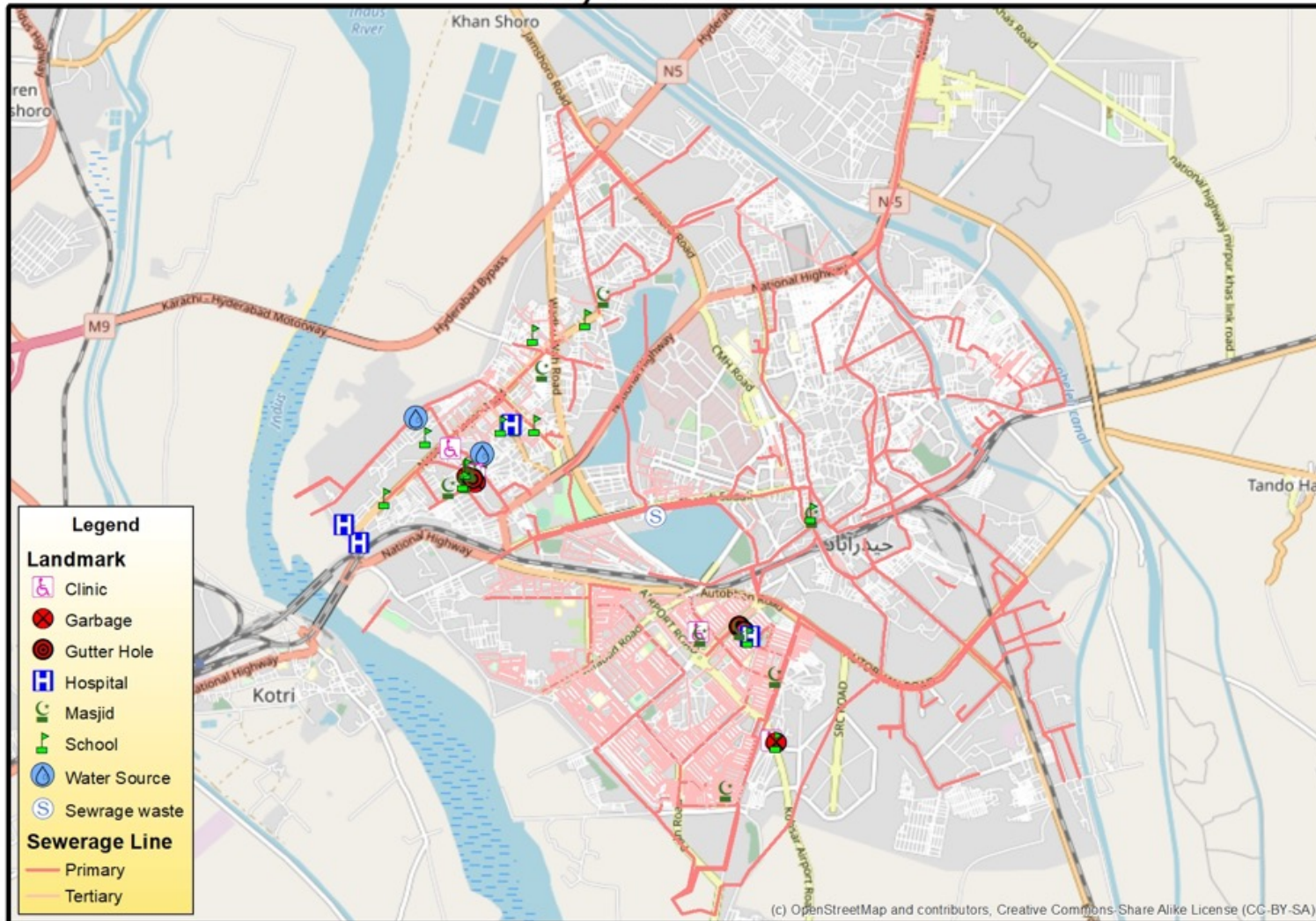
11th International conference on Typhoid, 2019

Date: March 20, 2018

10

Hyderabad

Overview



3/26/19



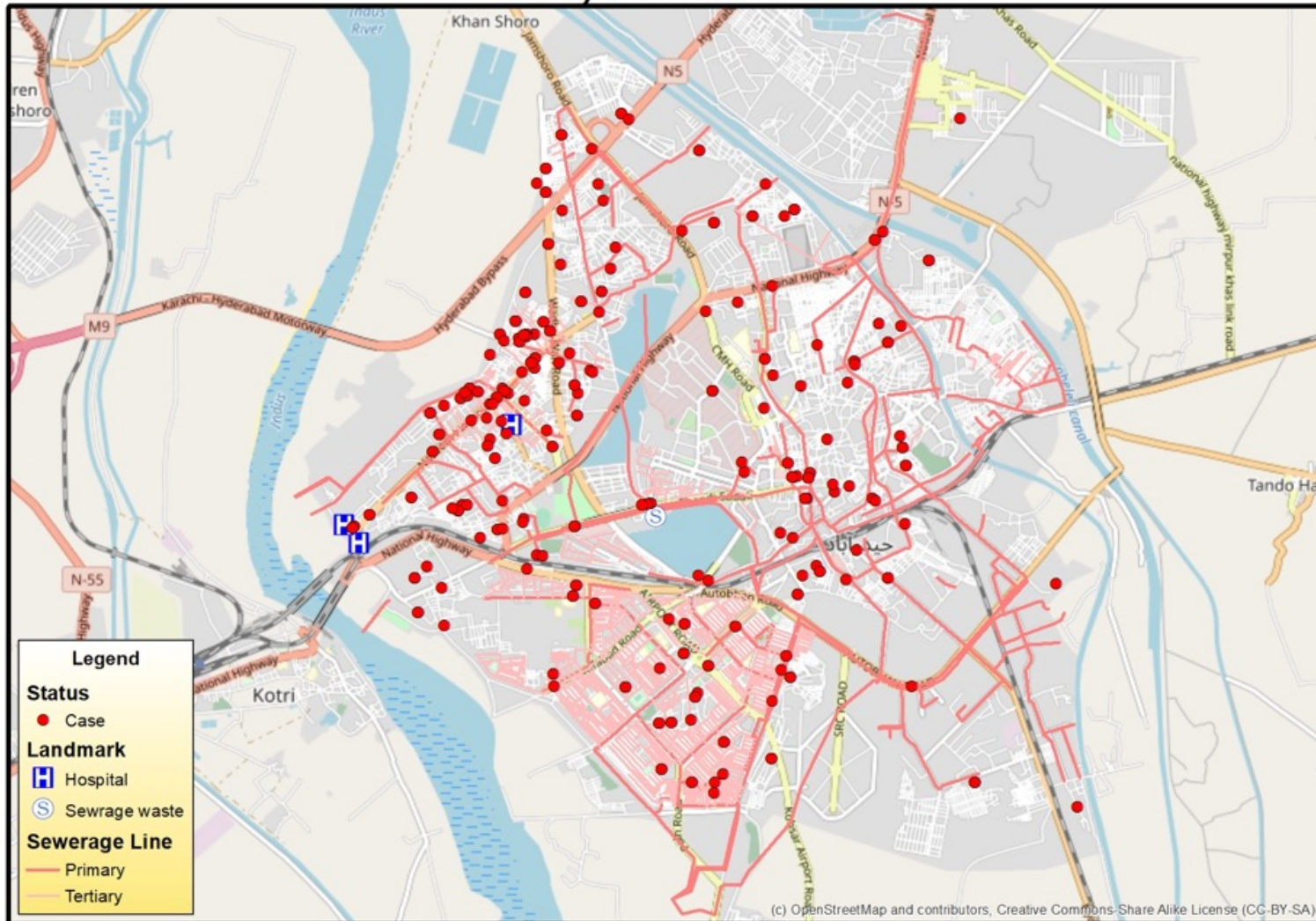
11th International conference on Typhoid, 2019

Date: March 20, 2018

11

Hyderabad

Overview



3/26/19



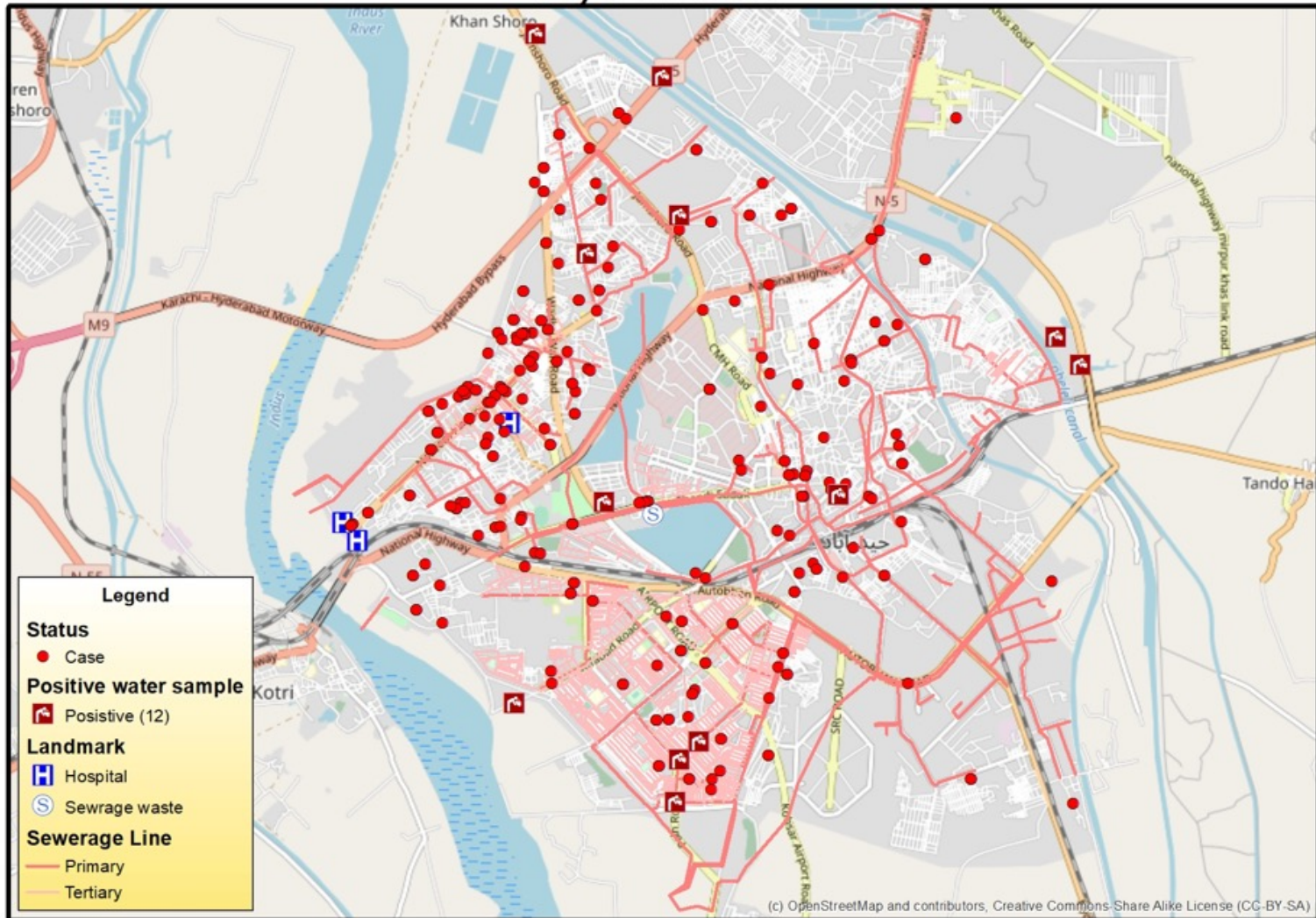
11th International conference on Typhoid, 2019

Date: March 20, 2018

12

Hyderabad

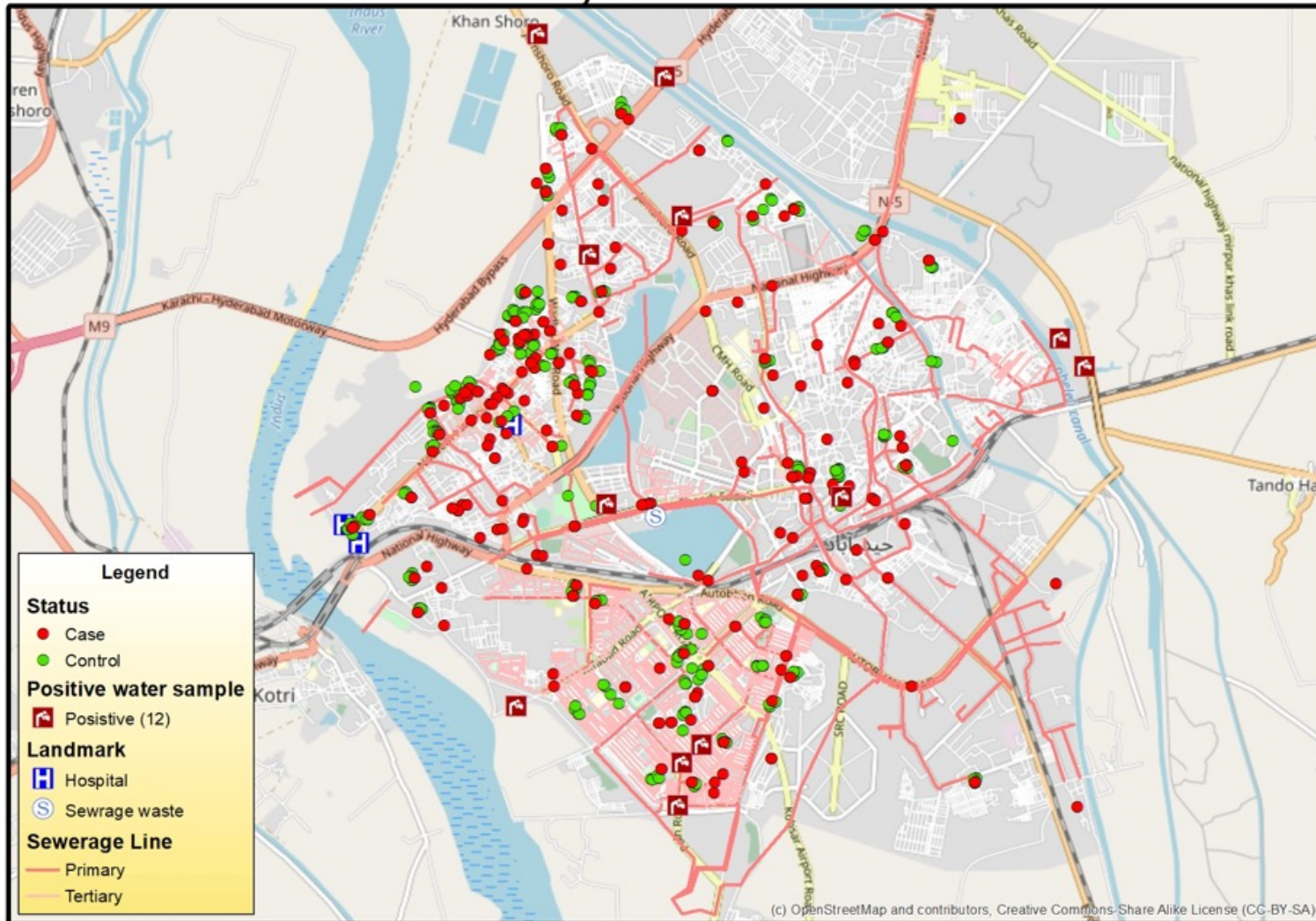
Overview



(c) OpenStreetMap and contributors, Creative Commons Share Alike License (CC-BY-SA)

Hyderabad n=486

Overview



3/26/19



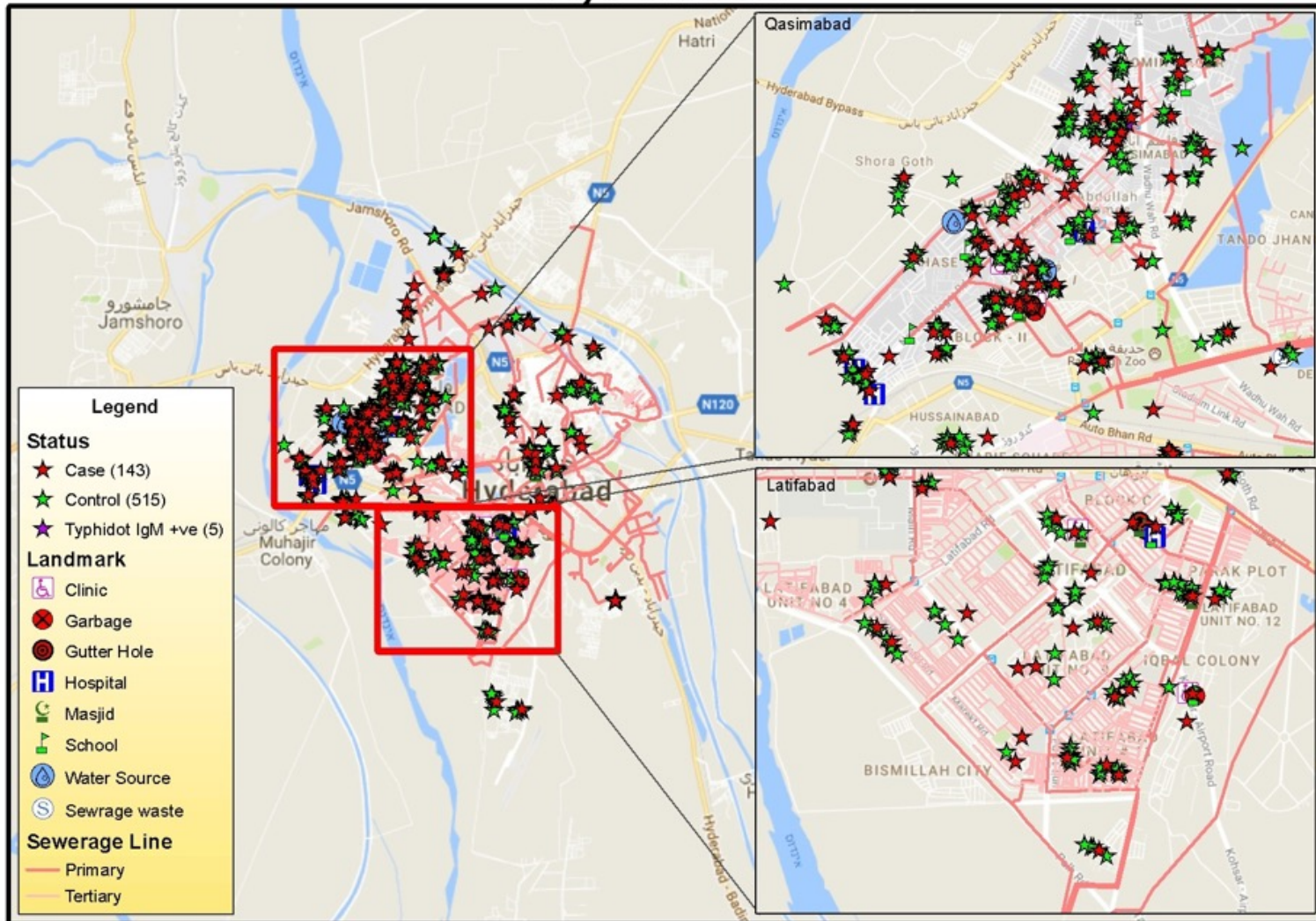
11th International conference on Typhoid, 2019

Date: March 20, 2018

14

Hyderabad

Overview





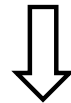
Karachi

Extracting Geospatial information from Lab Data I

List of culture positive XDR *S.typhi* is obtained from AKU diagnostic lab.

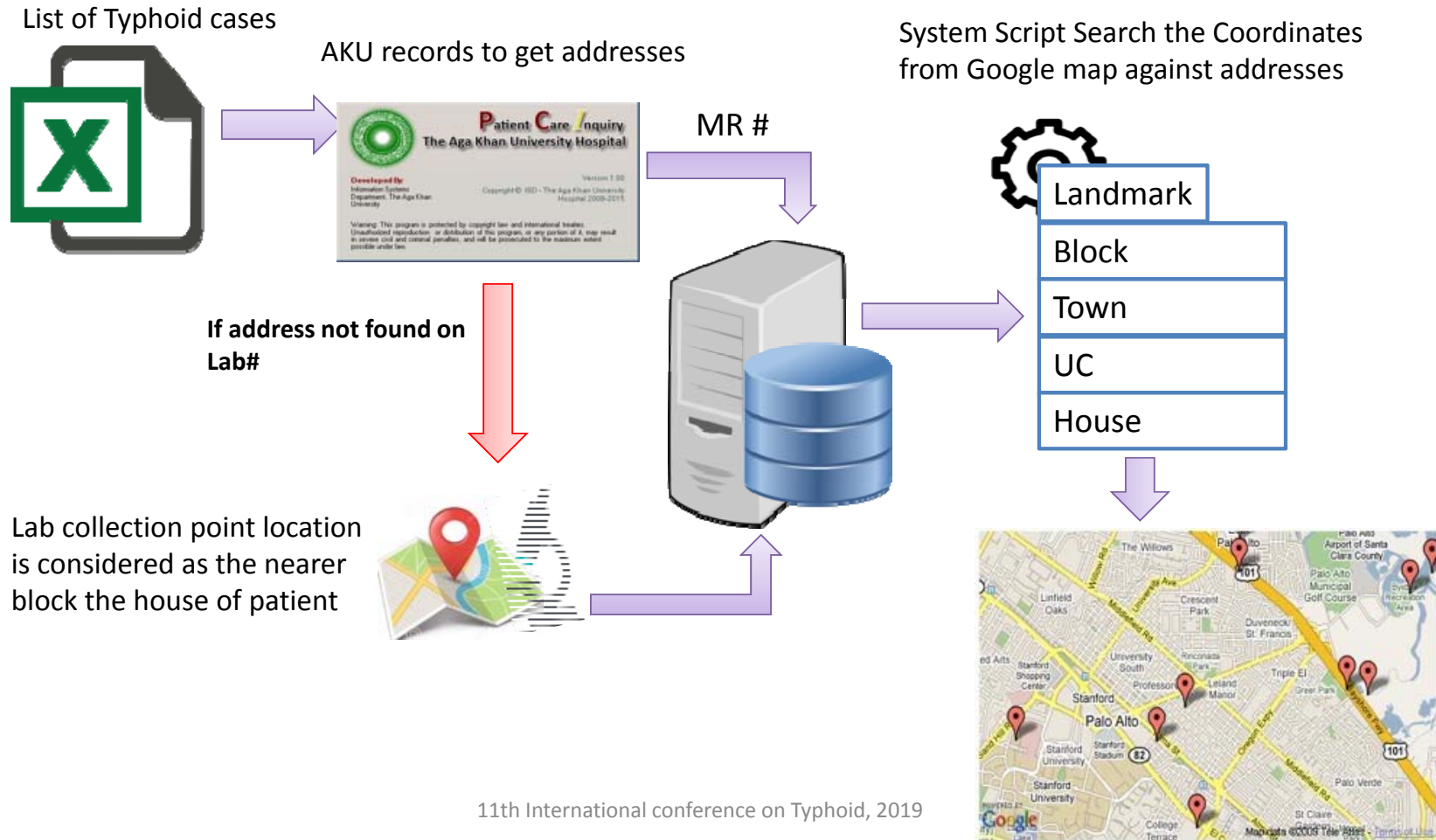


The list whether states the medical record (MR) number or the lab (L) number of patient



Different strategies are acquired to locate the coordinates.

Extracting Geospatial information from Lab Data I



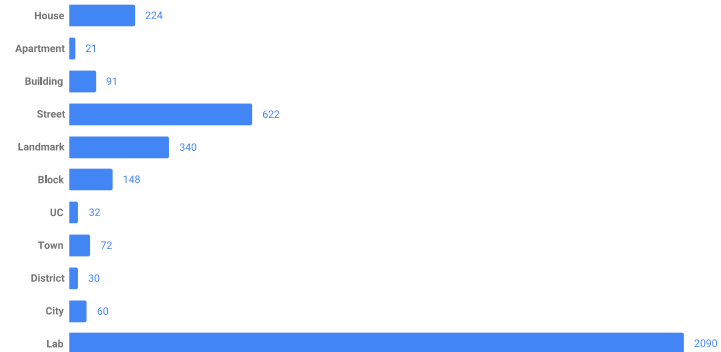
Extracting Geospatial information from Lab Data I

Typhoid Cases Statistics

Total No. of sensitive cases	3730
-------------------------------------	-------------

Address Sources	Total	%
House	224	6.01%
Apartment	21	0.56%
Building	91	2.44%
Street	622	16.68%
Landmark	340	9.12%
Block	148	3.97%
UC	32	0.86%
Town	72	1.93%
District	30	0.80%
City	60	1.61%
Lab	2090	56.03%

Total No. of Typhoid Cases (Sensitive)

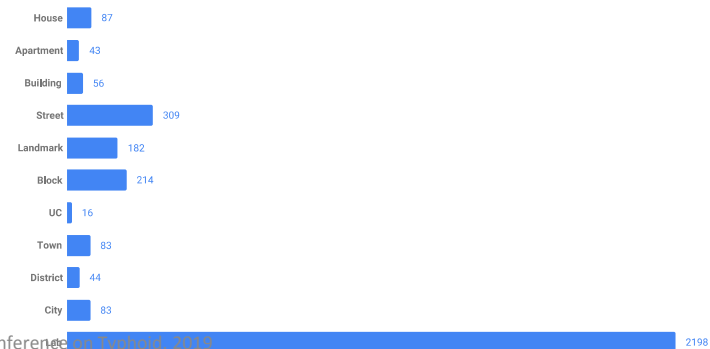


Typhoid Cases Statistics

Total No. of resistance cases	3315
--------------------------------------	-------------

Address Sources	Total	%
House	87	2.62%
Apartment	43	1.30%
Building	56	1.69%
Street	309	9.32%
Landmark	182	5.49%
Block	214	6.46%
UC	16	0.48%
Town	83	2.50%
District	44	1.33%
City	83	2.50%
Lab	2198	66.30%

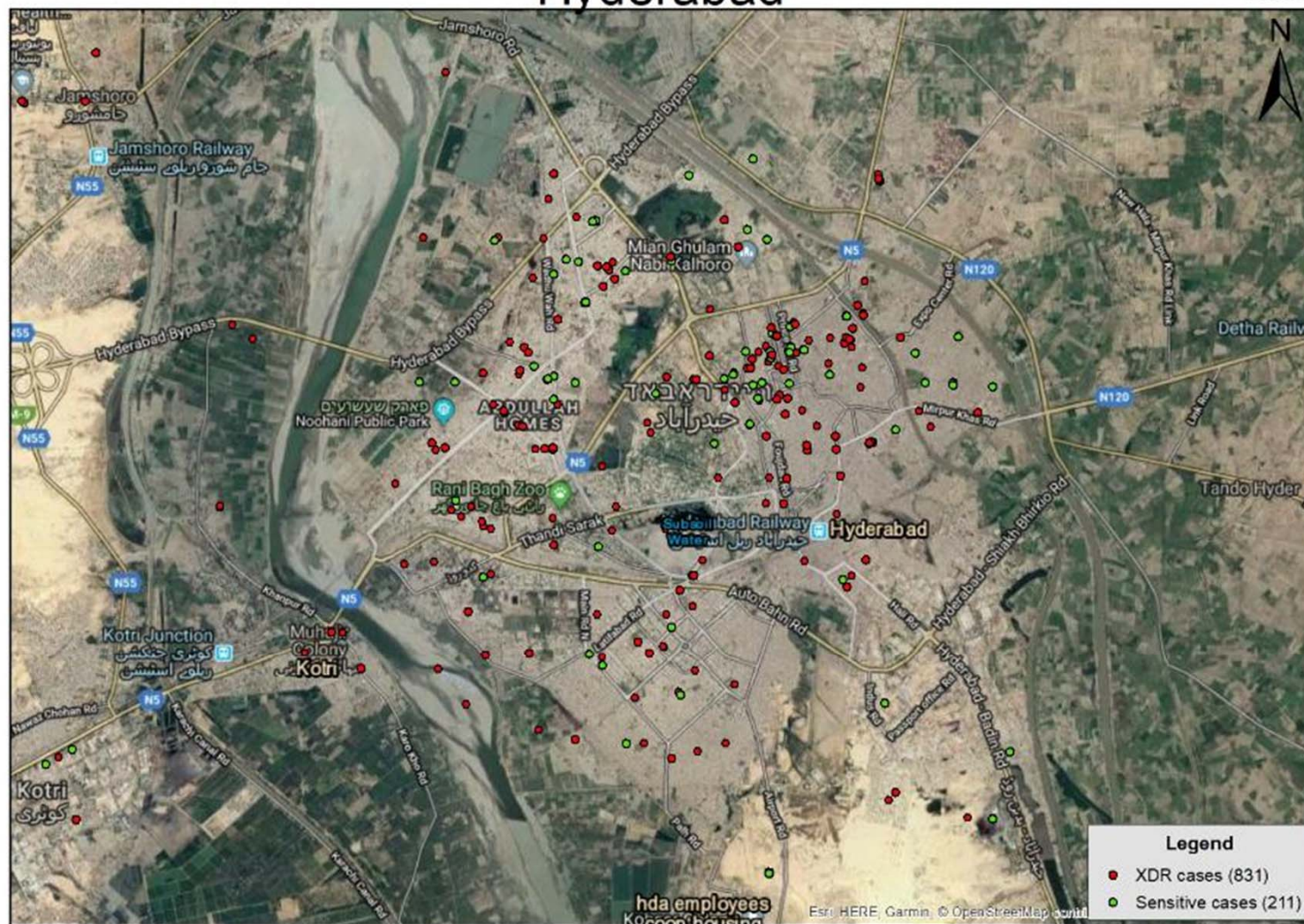
Total No. of Typhoid Cases (Resistance)



Karachi

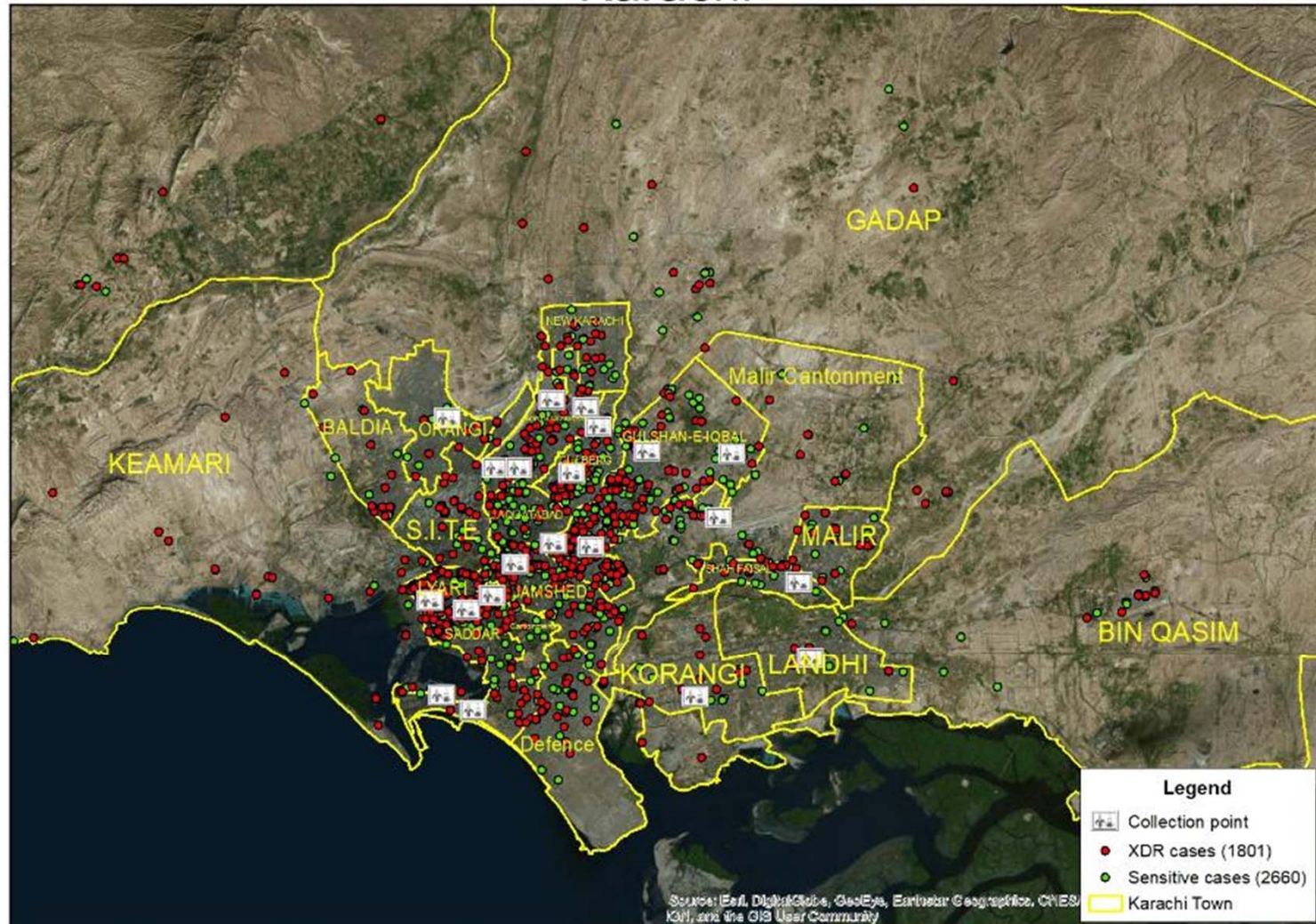
Hyderabad

Overview



Karachi

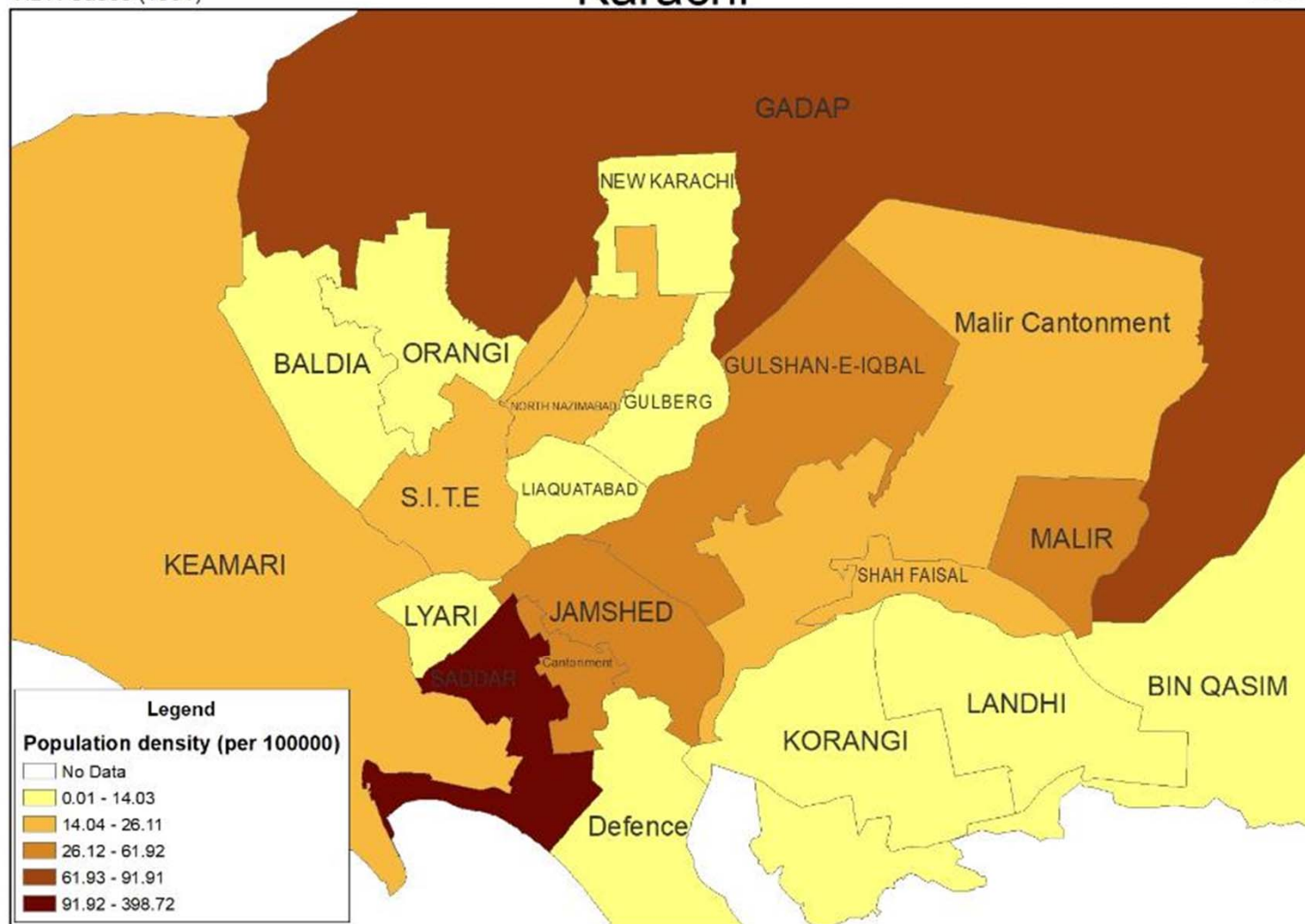
Overview



0 13 Kilometers



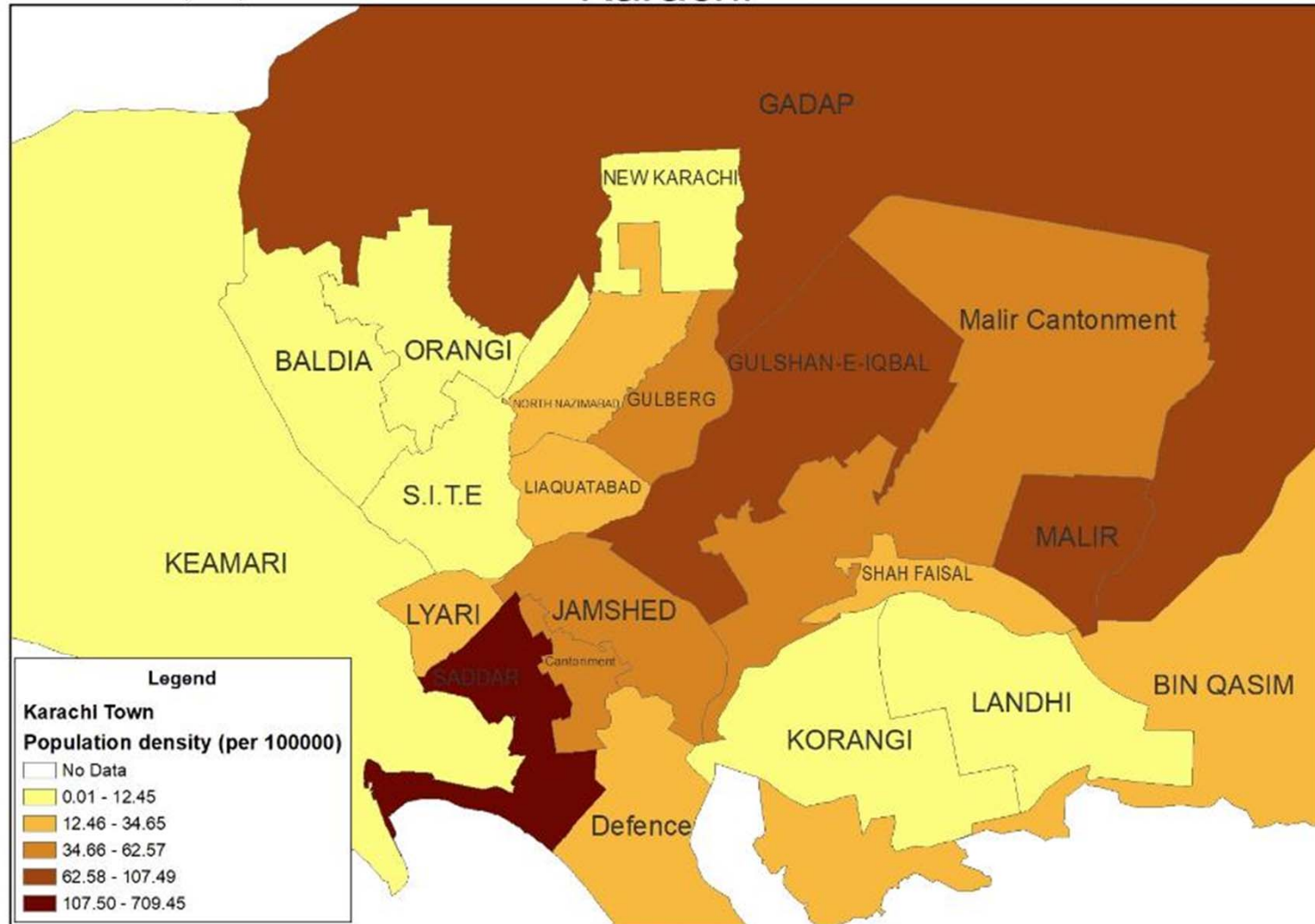
Date: March 20, 2019



Sensitive Cases (2660)

Karachi

Overview



0 8 Kilometers



Date: March 20, 2019

XDR cases

Ceftriaxone Resistance

Overview



Ceftriaxone Resistance

Overview



Ceftriaxone Resistance

Overview

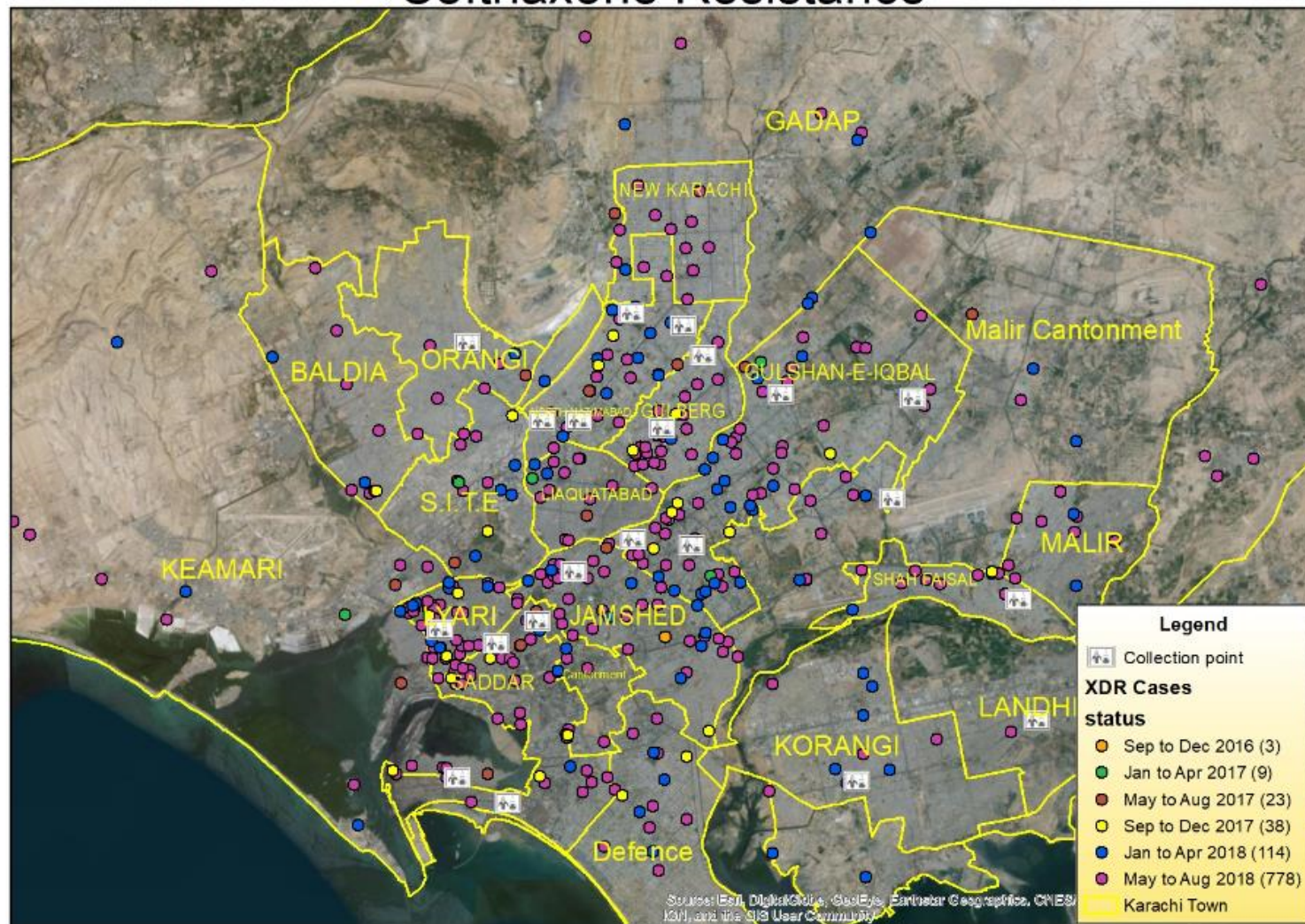


Sources: Esri, DigitalGlobe, GeoEye, Earthstar Geographics, CNES/Airbus, IGN, and the GIS User Community



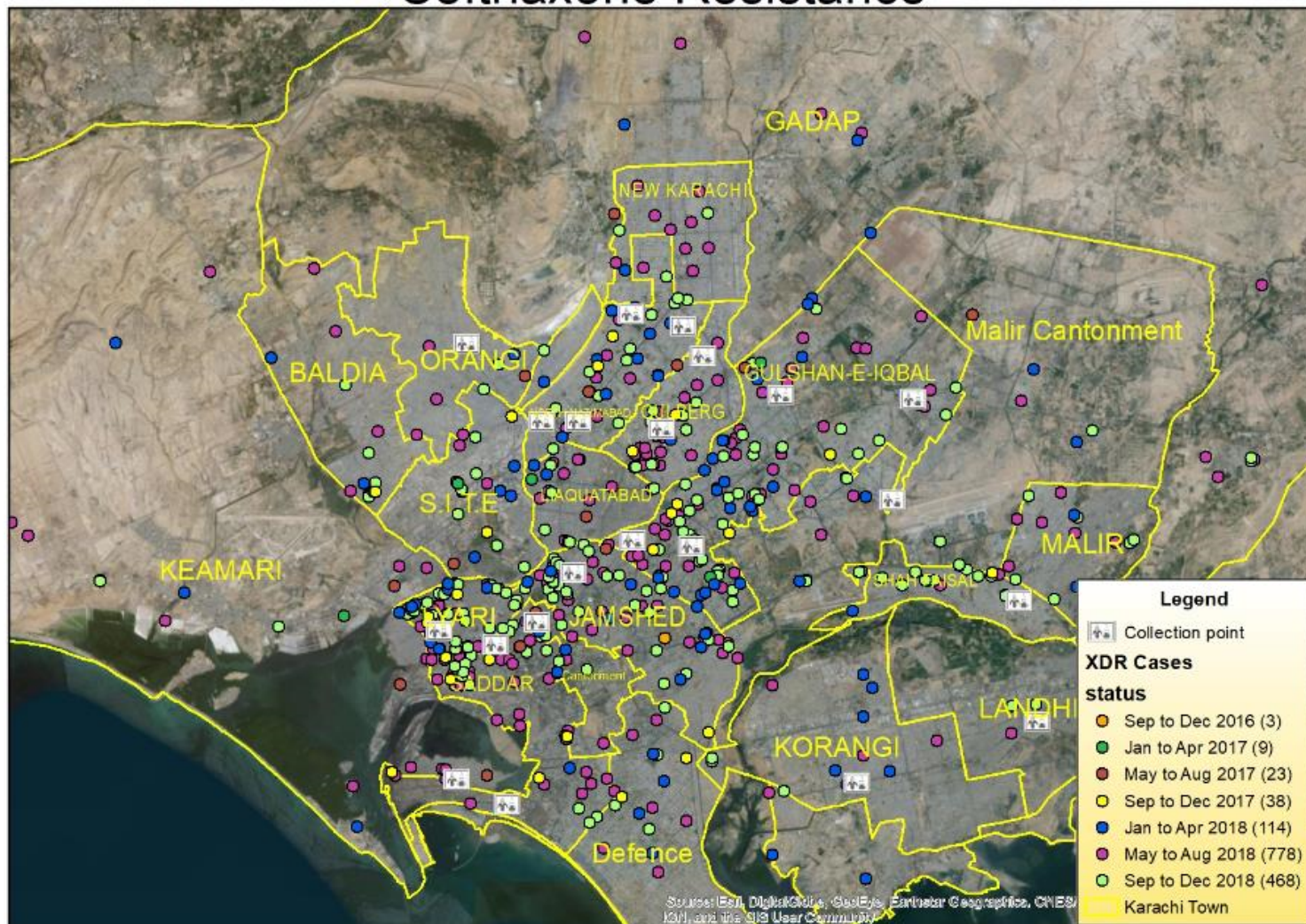
Ceftriaxone Resistance

Overview



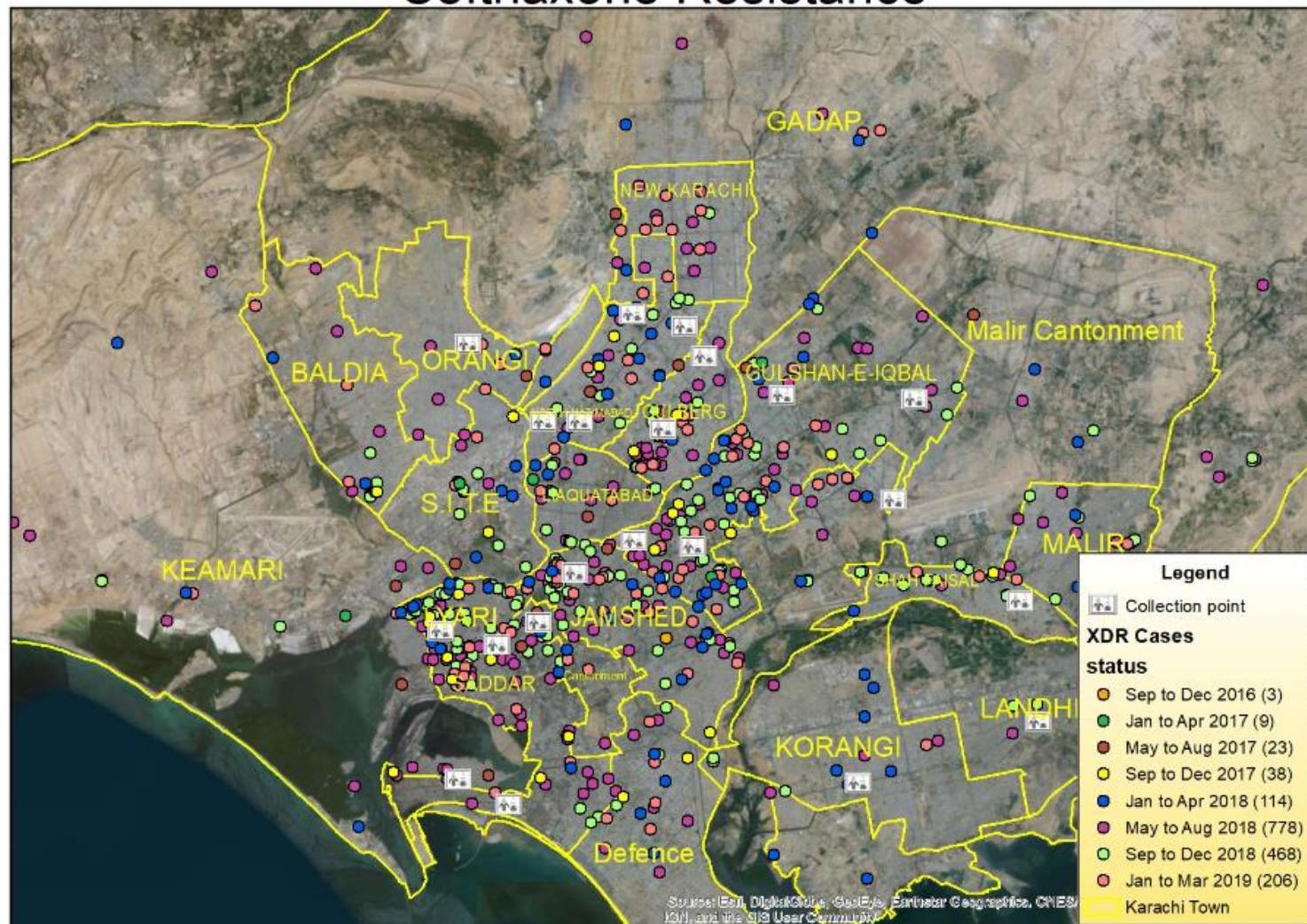
Ceftriaxone Resistance

Overview



Ceftriaxone Resistance

Overview



Study Limitation

- The culture positive cases are only Aga University Hospital main and satellite labs
- In process of getting culture positive XDR cases location information from other major labs in Karachi, Sindh and Pakistan.
- In liaison with government of Sindh

Next step I

- **To generate Prediction models for spread of ceftriaxone-resistant Salmonella enterica serotype Typhi Outbreak in Pakistan using geospatial, genomic, environmental and sero-prevalence data**
 - Collect geospatial data through different techniques and examine changes in the spatial distribution of incidence over time
 - To conduct a sero prevalence study on a sub population
 - Utilize genomic and other epidemiological data to understand the mechanism of spread across major cities of Pakistan
 - To investigate the transmission dynamics of typhoid by collecting in-depth information about the water, sanitation and hygiene practices of the population at risk

Acknowledgements

Aga Khan University Karachi CDC FELTP & Dept of

Farah Qamar
Tahir Yousufzai
Ayub Khan
Yasir Rauf
Hussain Kalimuddin
Sadiah Shakoor
Seema Irfan
Afia Zafar
Heeramani Lohana
Sultan Karim

Health Sindh

Naveed Masood
Mudasir Rauf
DG Health; Dept of
Health Sindh

PPA Hyderabad Chapter

Dr Chandi Ram
Dr Shafqat Ahmed

Expert Panel:

Stephen Luby (Stanford)
Denise Garrett (Sabin Vaccine Institute)
Jason Andrews (Stanford)

Bill and Melina Gates Foundation